

Installation Manual

Sublimation Type Retransfer Printer CX-330

Printer Software



Operating Environment

This software runs on the following systems.

Microsoft® Windows® 7 32bit/64bit

Microsoft® Windows Vista™ 32bit

Microsoft® Windows® XP 32bit (Service Pack 2)

Microsoft® Windows® 2000 Professional 32bit (Service Pack 4)

Software License Agreement

Users need to accept the terms and conditions of the software license agreement to use this software. Please read through the “Software License Agreement” at the back of the “CX-330 Instruction Manual” (separate booklet) before using this software.

June 2010, 4th Edition

Contents

Installer (Automatic Execution Program).....	3
Application-Based Operation Guide	5
Installation	6
Installing the Printer Driver via USB Connection.....	6
Installing the Printer Driver via Ethernet (LAN) Connection	12
Installing the Status Monitor.....	16
Installing the USB Driver.....	18
Installing the Printer Driver: Shared Network	22
Uninstallation	26
Deleting the Printer Driver via USB Connection.....	26
Updating the Printer Driver via USB Connection.....	27
Deleting the Printer Driver via Ethernet (LAN) Connection	28
Updating the Printer Driver via Ethernet (LAN) Connection.....	29
Deleting the Status Monitor.....	30
Updating the Status Monitor	30
IP Sec Setup.....	31
Flow of IP Sec Setting	31
Preshared Key File	32
Printer Certificate File	33
Certification Authority Certificate File.....	34

Notes about this manual

- (1) All rights reserved. Unauthorized reproduction and use of this manual is strictly prohibited.
- (2) Details of this manual or printer specifications and appearance are subject to changes without prior notice.
- (3) Illustrations used in this manual may differ slightly from the actual product.
- (4) Microsoft and Windows are either registered trademarks or trademarks of Microsoft Corporation in the United States and/or other countries. Microsoft® Windows® 7 operating system, Microsoft® Windows Vista™ operating system, Microsoft® Windows® XP operating system and Microsoft® Windows® 2000 operating system are represented as Windows® 7, Windows Vista™, Windows® XP and Windows® 2000 respectively in this manual.
- (5) Microsoft product screen shot(s) reprinted with permission from Microsoft Corporation.
- (6) This product includes software developed by the OpenSSL Project for use in the OpenSSL Toolkit. (<http://www.openssl.org/>)
This product includes cryptographic software written by Eric Young (eay@cryptsoft.com).
This product includes software written by Tim Hudson (tjh@cryptsoft.com).

Installer

Installer (Automatic Execution Program)

Outline

Using the installer (automatic execution program) enables you to install the printer software as well as open the folder containing the electronic manual easily.

The installer installs programs according to the language settings of Windows®. To change the language settings, make use of the Language pull-down menu. (To be explained later)

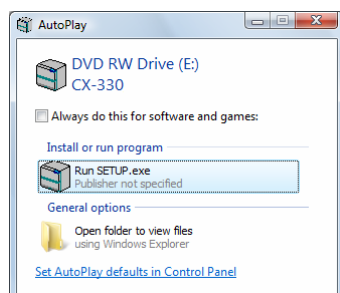
Operating Environment

This software runs on the following systems.

- Microsoft® Windows® 7 32bit/64bit
- Microsoft® Windows Vista™ 32bit
- Microsoft® Windows® XP
32bit (Service Pack 2)
- Microsoft® Windows® 2000 Professional
32bit (Service Pack 4)

Caution

Login as a user with the administrator authority (Administrators group), to install or delete the software.

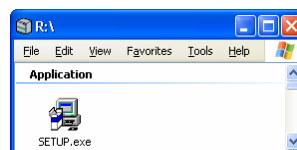


Operating Procedure

Caution

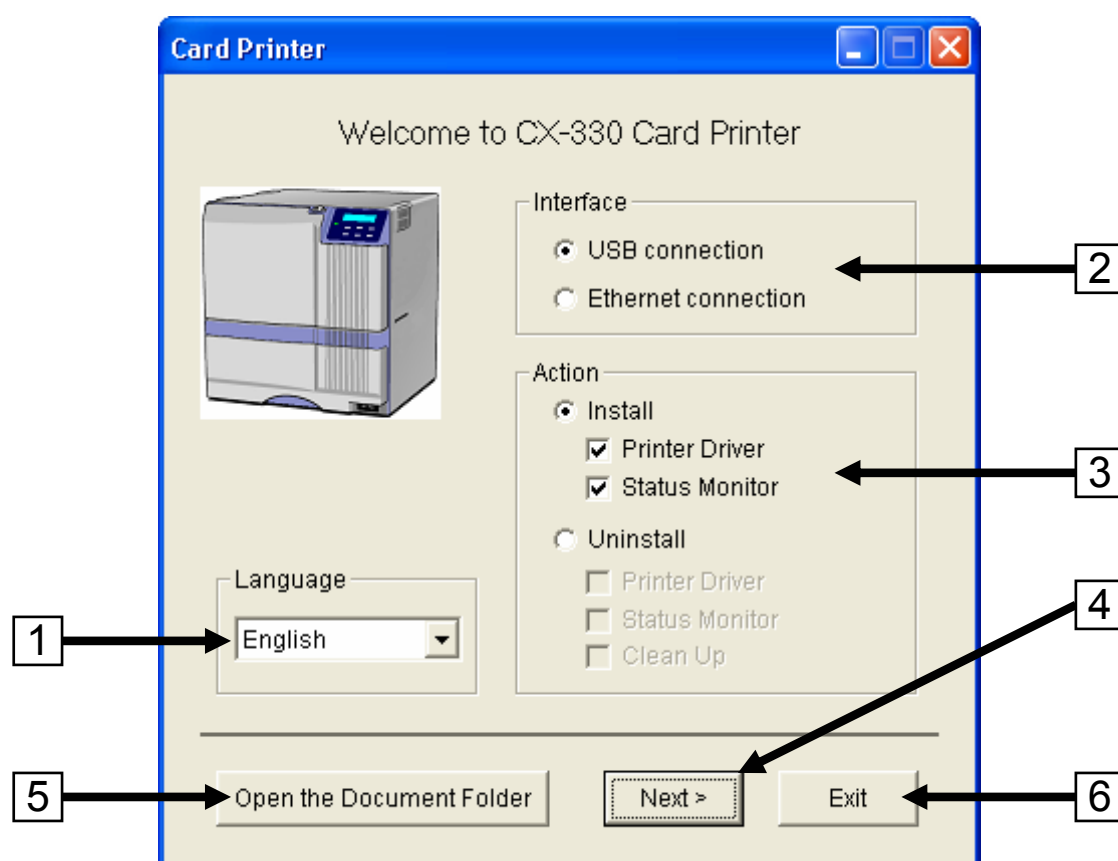
Some of the figures in this manual may not appear depending on the operating environment of the PC. Skip the steps in this case.

1. Do not connect the printer to the USB or Ethernet (LAN), or turn on the power of the printer until instruction asking you to do so appears.
2. Start up Windows®, and set the CD-ROM supplied in the PC.
3. The installer runs automatically on PCs that plays back the CD-ROM drive automatically. If the installer does not run automatically, double-click “Setup.exe” in the CD-ROM folder.



4. When the “Autoplay” screen appears, click the [Run SETUP.exe] button. Refer to left-side screen. (Windows® 7 / Windows Vista™)
5. When the “User Account Control” screen appears, click the “Allow” button. (Windows® 7 / Windows Vista™)
6. The following screen appears.

Installer (Cont'd)



Step	Description
1	Select the language to use from the pull-down menu. (1) Selecting "Japanese" switches the program to the Japanese version. (2) Selecting "English" switches the program to the English version.
2	Select the interface for connecting the printer. (1) To connect the printer using USB, click "USB connection". (2) To connect the printer using Ethernet (LAN), click "Ethernet connection".
3	Select a program action. (1) To install the program, click "Install" and tick the "Printer Driver" and "Status Monitor" boxes accordingly. (2) To uninstall the program, click "Uninstall" and tick the "Printer Driver" and "Status Monitor" boxes accordingly.
4	Start installation or uninstallation. (1) For connection via USB, the printer driver (including the USB driver) is installed, followed by the status monitor. (2) For connection via Ethernet, the status monitor is installed before the printer driver. (3) Uninstallation starts from the printer driver, followed by the status monitor.

(Cont'd)

Installer (Cont'd)

(Cont'd)

Step	Description
5	Open the folder containing the electronic manual.
6	Exit the installer (automatic execution program).

Caution

The status monitor software can be used for printers using the USB or Ethernet connection in common. Install the status monitor only once on each PC.

To continue using the status monitor after uninstalling the printer driver, update the status monitor.

Application-Based Operation Guide

Application	Installer Options			Refer to
	Interface	Action		
Print via USB connection	USB Connection	Install	Printer Driver	P. 6
			Status Monitor	P. 16
Print via Ethernet (LAN) connection	Ethernet Connection	Install	Status Monitor	P. 16
			Printer Driver	P. 12
Print via USB and Ethernet (LAN) connections using the same printer	USB Connection	Install	Printer Driver	P. 6
			Status Monitor	P. 16
	Ethernet Connection	Install	Printer Driver	P. 12
Print using a USB connection printer with programs installed via a shared network	Share the network using features of Windows®.			P. 22
Monitor the Ethernet (LAN) connection printer	Ethernet Connection	Install	Status Monitor	P. 16
Specify the printer's "Network Setting" and "Security Setting" via USB Print after encryption using IP Sec	Install the USB driver using features of Windows®.			P. 18
	USB Connection	Install	Status Monitor	P. 16
	Specify the printer settings using the status monitor			P. 31
	Ethernet Connection	Install	Printer Driver	P. 12
Delete the USB connection printer	USB Connection	Uninstall	Printer Driver	P. 26
Delete the Ethernet (LAN) connection printer	Ethernet Connection	Uninstall	Printer Driver	P. 28
Delete the status monitor	USB Connection	Uninstall	Status Monitor	P. 30

Installation

Installing the Printer Driver via USB Connection

1. Do not connect the printer to the USB, or turn on the power of the printer until instruction asking you to do so appears on the installer.

Caution

You need to enable the USB hub before connecting the printer via this hub.

Do not connect the printer to the USB hub until it is enabled.

2. Start up Windows®, and set the CD-ROM supplied into the PC.

Caution

Installing needs administrator authority.

3. If you are not using the “Setup.exe” automatic execution program in the CD-ROM, start the installer for the printer driver by double-clicking the following file in the CD-ROM.

“English\USB_Soft\install.exe”

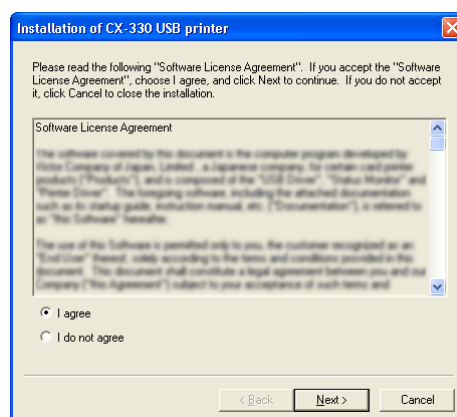
Note

To use the “Setup.exe” automatic execution program, refer to the chapter on “Installer (Automatic Execution Program).” You can start the installer for the printer driver using the automatic execution program.

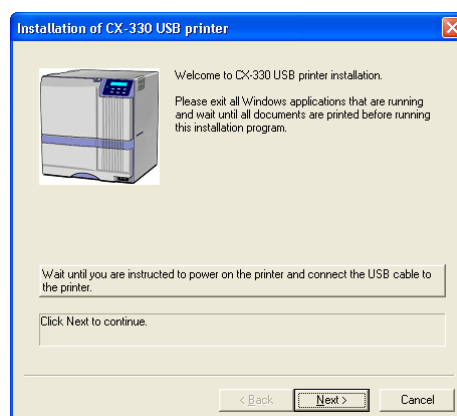
4. When the screen below appears, read through the “Software License Agreement”.

If you agree to the terms and conditions of the software license agreement, select [I agree] and click the [Next] button.

If you do not agree, click the [Cancel] button to stop the installation.



5. When the following screen appears, check the content, followed by clicking the [Next] button.

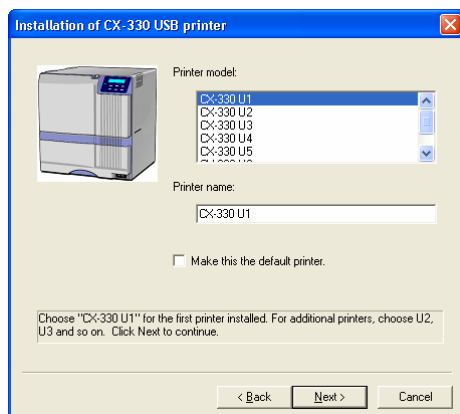


Caution

Exit all applications that are currently running. If document printing is currently in progress, wait for all the print jobs to complete.

Installation (Cont'd)

- 6.** When the following screen appears,
- (1) select a [Printer model] using the table below as reference,
 - (2) enter the [Printer name],
 - (3) select [Make this the default printer] if necessary,
 - (4) and click the [Next] button.



Printer Unit No.	Printer Model Options	USB Device Name
1 (Factory Setting)	CX-330 U1	CX-330 U1
2	CX-330 U2	CX-330 U2
3	CX-330 U3	CX-330 U3
4	CX-330 U4	CX-330 U4
5	CX-330 U5	CX-330 U5
6	CX-330 U6	CX-330 U6
7	CX-330 U7	CX-330 U7

Caution

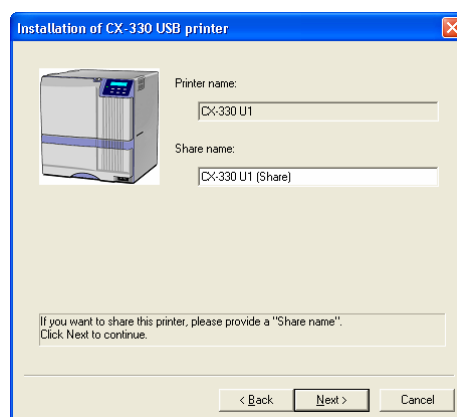
Select a printer model according to the printer unit number. Installation may fail if the combination is incorrect.

Note

Refer to the item on “Unit Number Setting Mode” in the “CX-330 Instruction Manual” (separate booklet) for details on the printer unit number.

- 7.** When the following screen appears,

- (1) enter the [Share name] if you are sharing the printer,
- (2) and click the [Next] button.

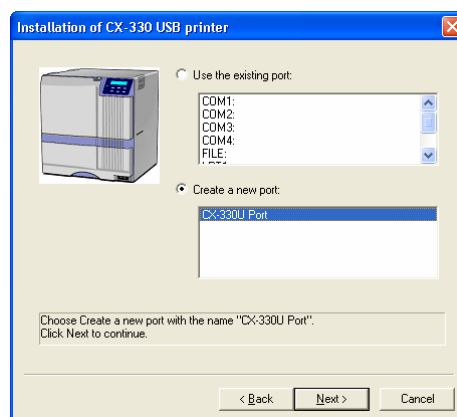


Note

Sharing of printers can also be set after installation is complete.

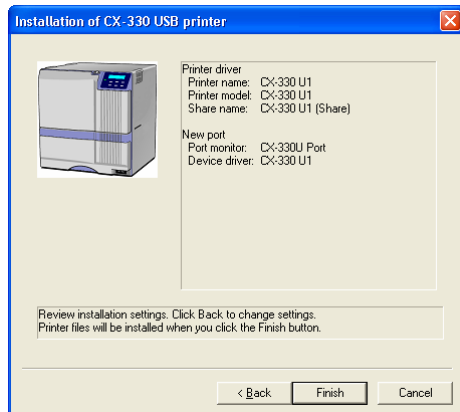
- 8.** When the following screen appears,

- (1) select [CX-330U Port] from [Create a new port],
- (2) and click the [Next] button.



Installation (Cont'd)

9. When the following screen appears, check the printer's installation information. Click [Finish] to start installation.

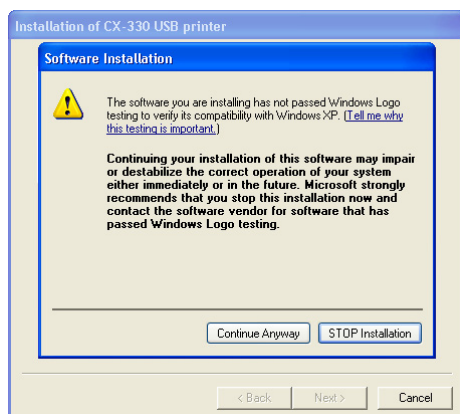


Note

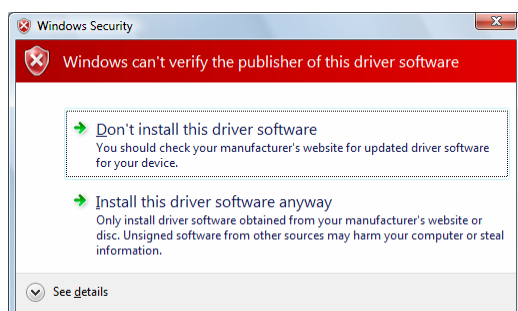
To change the setting, click the [Back] button.

10. When the following screen appears, click the [Continue Anyway] button.

(Windows® XP)

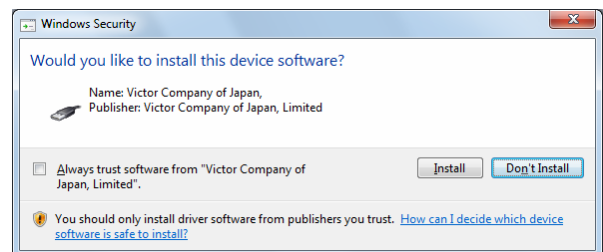


When the following screen appears, click the [Install] part. (Windows® 7 / Windows Vista™)



When the following screen appears, click the [Install] button.

(Windows® 7 / Windows Vista™)

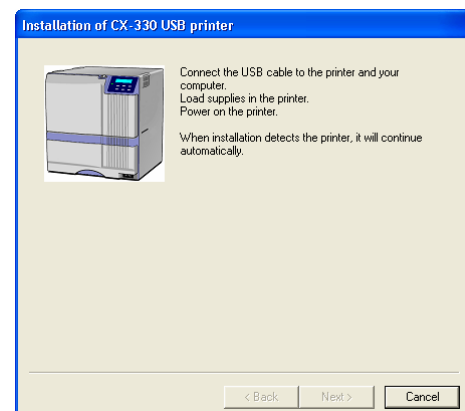


Note

When the above screen appears at any procedure, click the [Install] button.

11. When the following screen appears,
(1) connect the PC and the printer using the USB cable,
(2) and turn on the power of the printer.

Installation continues after the printer is detected.



Caution

If the connection is improper, the screens of next pages do not appear as the printer will not be detected.

Note

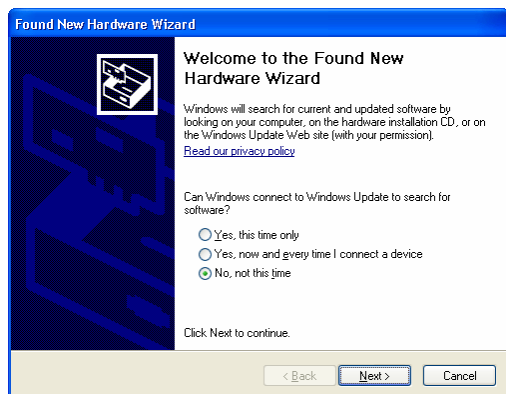
On Windows® 7 or Windows Vista™, the next screen is No.17.

Installation (Cont'd)

12. When the following screen appears,

- (1) select [No, not this time],
- (2) and click the [Next] button.

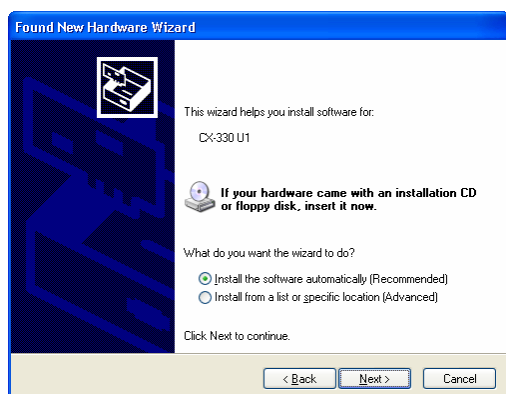
(Windows® XP SP2 only)



13. When the following screen appears,

- (1) select [Install the software automatically],
- (2) and click the [Next] button.

(Windows® XP only)

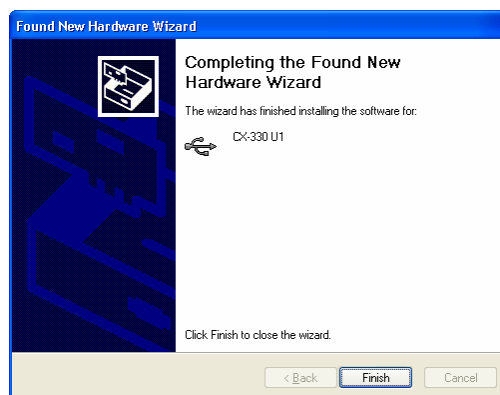


14. When the following screen appears, click the [Continue Anyway] button.

(Windows® XP only)



15. When the following screen appears, click the [Finish] button. (Windows® XP only)

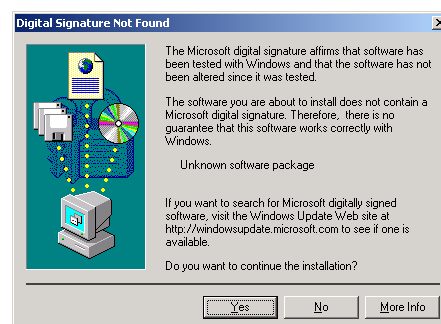


16. When the following screen appears, click the [Continue Anyway] button.

(Windows® XP)

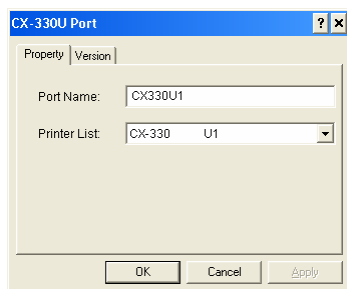


When the following screen appears, click the [Yes] button. (Windows® 2000)



Installation (Cont'd)

- 17.** When the following screen appears,
- (1) select the [Property] tab,
 - (2) select the printer that coincides with the USB device name from the [Printer List] by referring to Step 6,
 - (3) enter the port name in the [Port Name] field,
 - (4) and click the [OK] button.



Caution

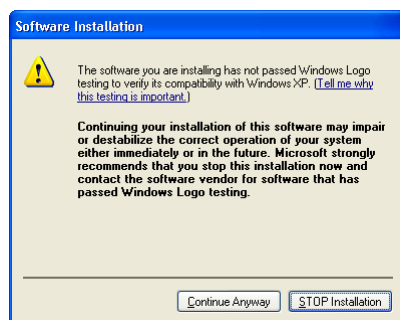
USB connection is improper if [No Device] appears in the [Printer List] field. In this case, complete the installation procedures, followed by re-installing the printer driver.

Note

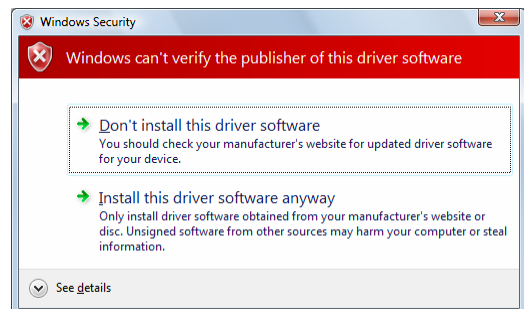
If [No Selection] appears in the [Printer List] field, select an item that coincides with the unit number of the printer that is currently being installed from the pull-down menu.

- 18.** When the following screen appears, click the [Continue Anyway] button.

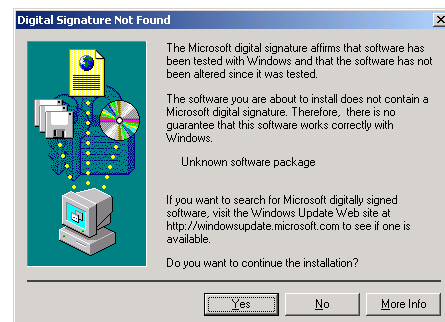
(Windows® XP)



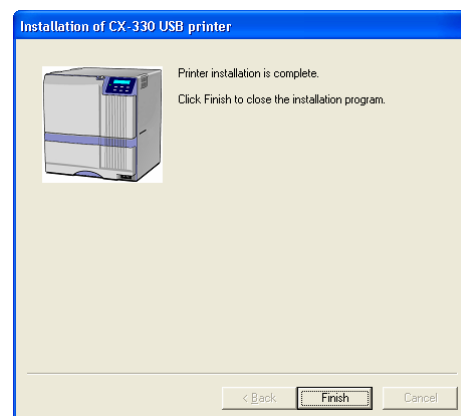
When the following screen appears, click the [Install] part. (Windows® 7 / Windows Vista™)



When the following screen appears, click the [Yes] button. (Windows® 2000)



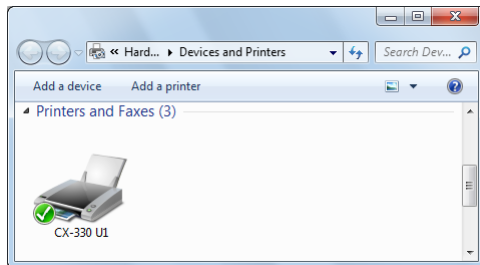
- 19.** When the following screen appears, click the [Finish] button to exit the program.



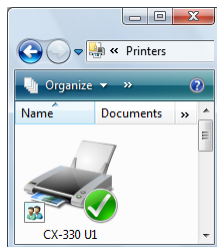
Installation (Cont'd)

- 20.** Open [Printers] in the [Control Panel], and check that the printer has been added.

Windows® 7



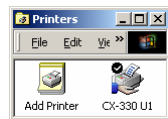
Windows Vista™



Windows® XP



Windows® 2000



Installation of the printer driver is complete.

Caution

To delete a printer, do so using [Delete printer driver] after restarting Windows®.

Installation (Cont'd)

Installing the Printer Driver via Ethernet (LAN) Connection

1. Follow the procedure below to set up the printer.
 - (1) Do not connect the printer to the USB or Ethernet (LAN).
 - (2) Turn off the power of the printer, and specify settings such as the IP address.
 - (3) Turn off the power of the printer.
 - (4) Connect the PC and printer using a LAN cable, followed by turning on the power of the printer.

Caution

You need to enable the LAN hub before connecting the printer via this hub.

Note

Refer to the item on “Network Settings” in the “CX-330 Instruction Manual” (separate booklet) for details such as the printer’s IP address.

2. Start up Windows®, and set the CD-ROM supplied into the PC.

Caution

Installing needs administrator authority.

3. If you are not using the “Setup.exe” automatic execution program in the CD-ROM, start the installer for the printer driver by double-clicking the following file in the CD-ROM.

“English\LAN_Soft\install.exe”

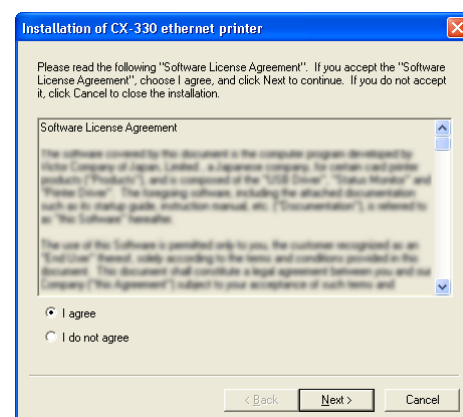
Note

To use the “Setup.exe” automatic execution program, refer to the chapter on “Installer (Automatic Execution Program).” You can start the installer for the printer driver using the automatic execution program.

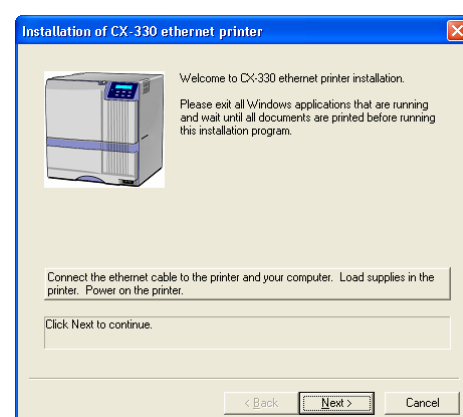
4. When the screen below appears, read through the “Software License Agreement”.

If you agree to the terms and conditions of the software license agreement, select [I agree] and click the [Next] button.

If you do not agree, click the [Cancel] button to stop the installation.



5. When the following screen appears, check the content, followed by clicking the [Next] button.

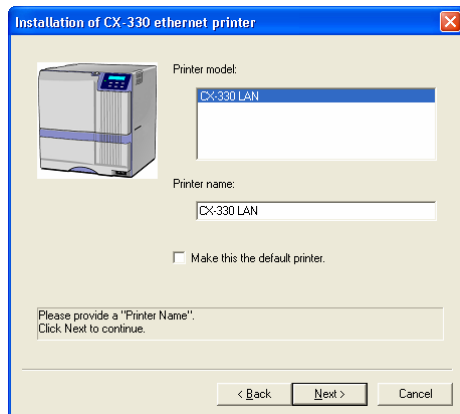


Caution

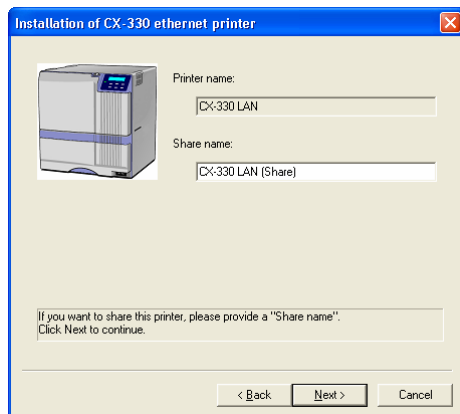
Exit all applications that are currently running. If document printing is currently in progress, wait for all the print jobs to complete.

Installation (Cont'd)

- 6.** When the following screen appears,
- (1) select a [Printer model],
 - (2) enter the [Printer name],
 - (3) select [Make this the default printer] if necessary,
 - (4) and click the [Next] button.



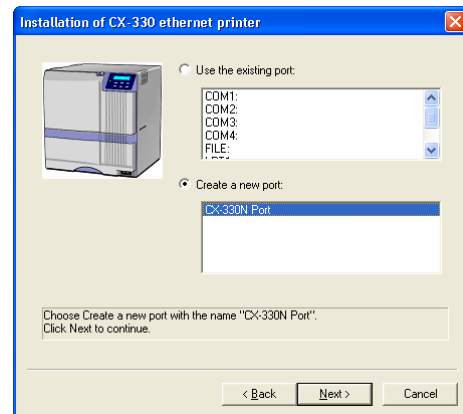
- 7.** When the following screen appears,
- (1) enter the [Share name] if you are sharing the printer,
 - (2) and click the [Next] button.



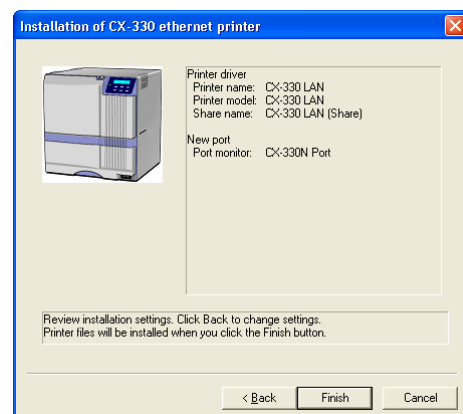
Note

Sharing of printers can also be set after installation is complete.

- 8.** When the following screen appears,
- (1) select [CX-330N Port] from [Create a new port],
 - (2) and click the [Next] button.



- 9.** When the following screen appears, check the printer's installation information. Click [Finish] to start installation.



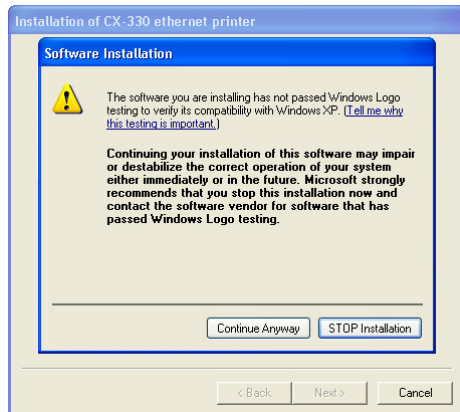
Note

To change the setting, click the [Back] button.

Installation (Cont'd)

- 10.** When the following screen appears, click the [Continue Anyway] button.

(Windows® XP only)

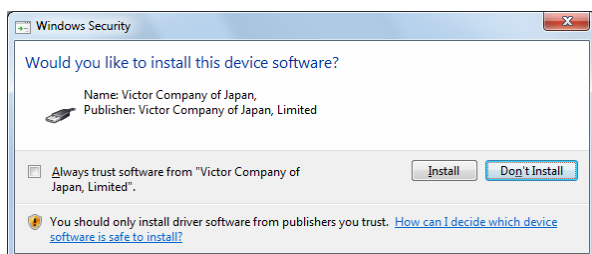


11~15.

Installation is performed automatically.

When the following screen appears, click the [Install] button.

(Windows® 7 / Windows Vista™)



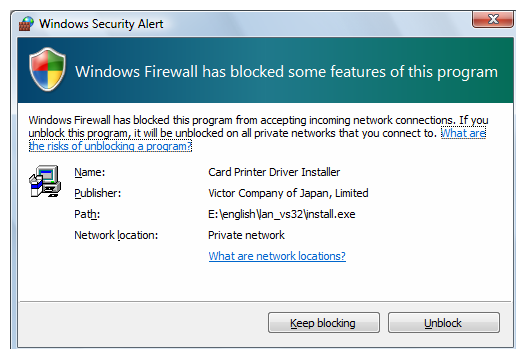
Note

When the above screen appears at any procedure, click the [Install] button.

- 16.** When the following screen appears, click [Unblock].(Windows® XP SP2)

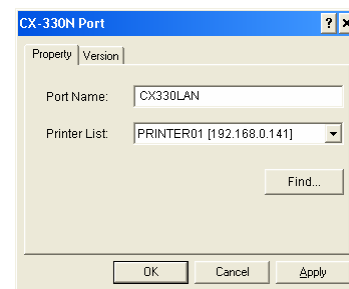


(Windows® 7 / Windows Vista™)



- 17.** When the following screen appears,

- (1) select the [Property] tab,
- (2) select a printer from the [Printer List],
- (3) enter the port name in the [Port Name] field,
- (4) and click the [OK] button.



Caution

Ethernet (LAN) connection is not established or the printer setting is incorrect if [No Device] appears in the [Printer List] field.

In the occasion when the printer that is currently being installed is not found even after clicking the [Find] button, complete the installation procedures, followed by re-installing the printer driver.

Note

If [No Selection] appears in the [Printer List] field, select an item that coincides with the IP address of the printer that is currently being installed from the pull-down menu.

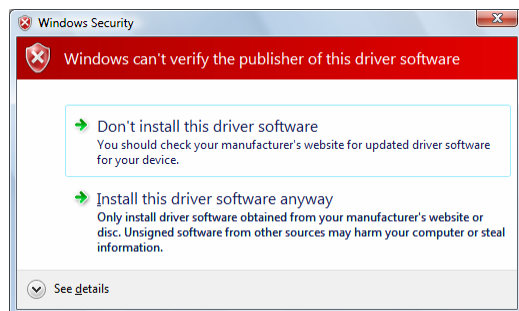
Installation (Cont'd)

- 18.** When the following screen appears, click the [Continue Anyway] button.

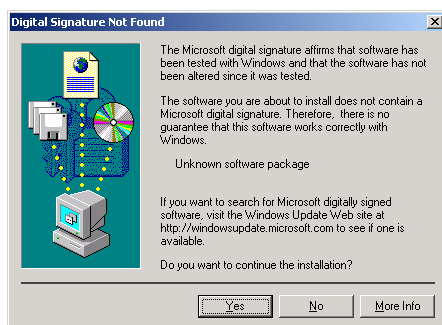
(Windows® XP)



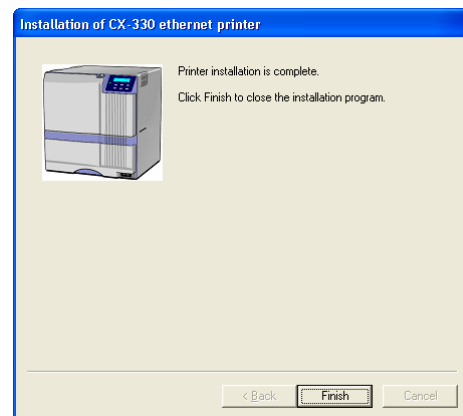
When the following screen appears, click the [Install] part. (Windows® 7 / Windows Vista™)



When the following screen appears, click the [Yes] button. (Windows® 2000)

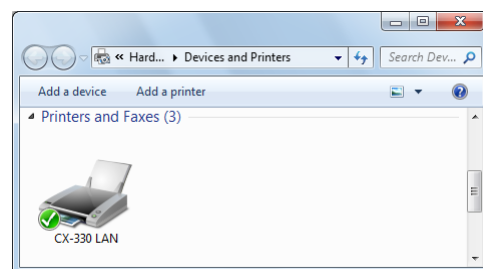


- 19.** When the following screen appears, click the [Finish] button to exit the program.

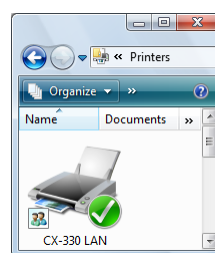


- 20.** Open [Printers and Faxes] in the [Control Panel], and check that the printer has been added.

Windows® 7



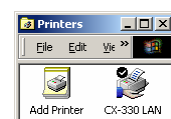
Windows Vista™



Windows® XP



Windows® 2000



Installation of the printer driver is complete.

Caution

To delete a printer, do so using [Delete printer driver] after restarting Windows®.

Installation (Cont'd)

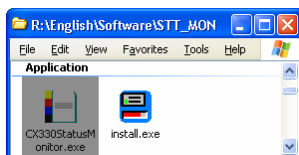
Installing the Status Monitor

1. Start up Windows®, and set the CD-ROM supplied into the PC.

Caution

Installing needs administrator authority.

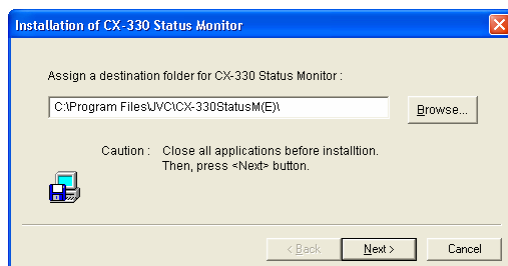
2. If you are not using the “Setup.exe” automatic execution program in the CD-ROM, start the installer for the status monitor by double-clicking the following file in the CD-ROM.
“English\Software\STT_MON\install.exe”



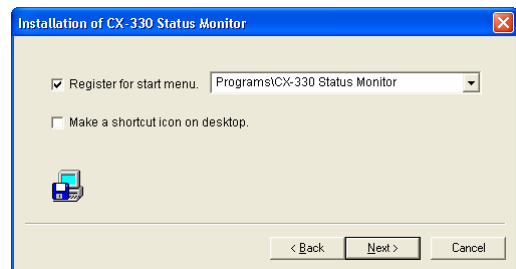
Note

To use the “Setup.exe” automatic execution program, refer to the chapter on “Installer (Automatic Execution Program).” You can start the installer for the status monitor using the automatic execution program.

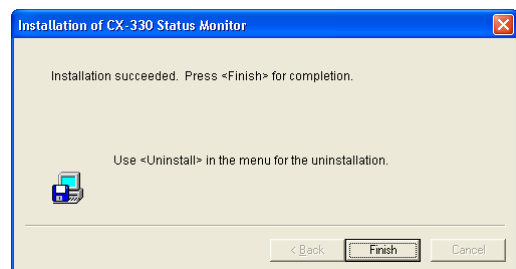
3. When the following screen appears,
(1) specify the destination to install the status monitor,
(2) and click the [Next] button.



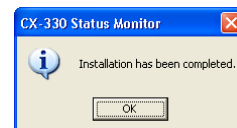
4. When the following screen appears,
(1) select [Register for start menu],
(2) and click the [Next] button.
Installation starts.



5. When the following screen appears, click the [Finish] button.

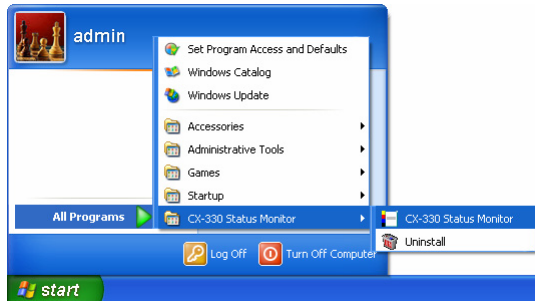


6. When the following screen appears, click the [OK] button to exit the installer.



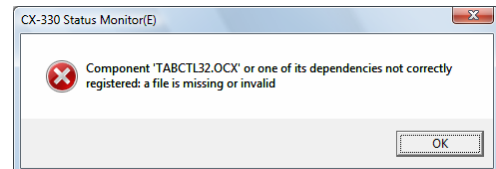
Installation (Cont'd)

After installation is complete, you can start the “CX-330 Status Monitor” from All user’s Start menu.



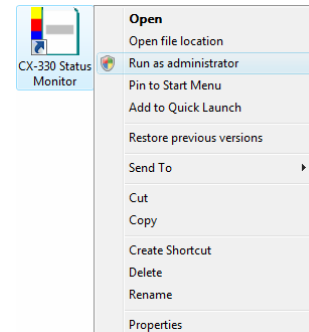
Caution

The following error may occur when the status monitor is started up on Windows® 7 or Windows Vista™.



Cause: The status monitor cannot run because it is an unidentified program by Windows®.

Action: Choose the “Run as administrator”, and the status monitor runs by an user within administrator authority. After that, this error does not occur because it becomes identified program by Windows®.



Caution

On Windows® 7 or Windows Vista™; even if an user logged on with the administrator account, the status monitor may be run by an user without administrator authority.

Installing the USB Driver

Important

The USB driver is also installed while you are installing the printer driver via USB connection.

Install the USB driver additionally only when you want to set items other than the [Printer Name] on the [Printer Select] screen of the status monitor.

1. Do not connect the printer to the USB, or turn on the power of the printer until instruction asking you to do so appears.

Caution

You need to enable the USB hub before connecting the printer via this hub.

Do not connect the printer to the USB hub until it is enabled.

2. Start up Windows®.
3. Set the CD-ROM supplied into the PC.
(On Windows® 7, Windows® XP or Windows® 2000.)
(On Windows Vista™, do not set the CD-ROM at this time.)

Caution

Installing needs administrator authority.

Note

The "Setup.exe" automatic execution program in the CD-ROM is not used. [Exit] this program.

For details on the "Setup.exe" automatic execution program, refer to the chapter on "Installer (Automatic Execution Program)."

4. Connect the PC and printer using a USB cable, followed by turning on the power of the printer.

On Windows Vista™, Windows® XP or Windows® 2000, the printer is automatically detected by the PC.

On Windows® 7, the printer is not automatically detected by the PC. Install the "Card Printer" manually from the "Devices and Printers".

5. Follow the steps on Windows® XP, Windows Vista™ or Windows® 2000 to install the USB driver.

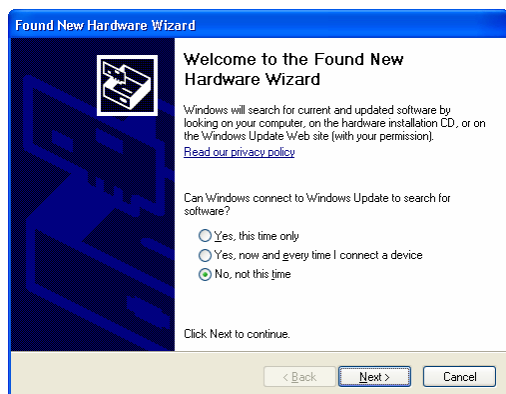
Installation (Cont'd)

Windows® XP

1. When the following screen appears,

- (1) select [No, not this time],
- (2) and click the [Next] button.

(Windows® XP SP2 only)

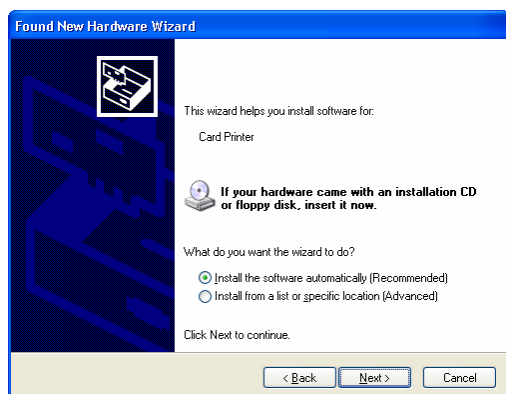


Caution

If the connection is improper, this screen does not appear as the printer will not be detected.

2. When the following screen appears,

- (1) select [Install the software automatically],
- (2) and click the [Next] button.



3. When the following screen appears, click the [Continue Anyway] button.



4. When the following screen appears, click the [Finish] button.

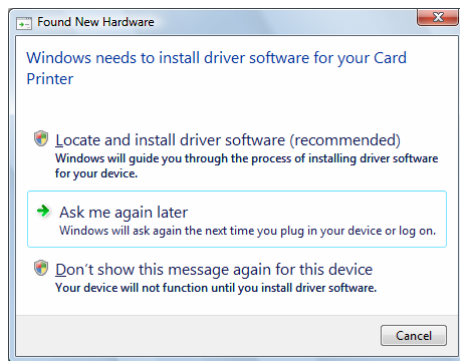


Installation of the USB driver is complete.

Installation (Cont'd)

Windows Vista™

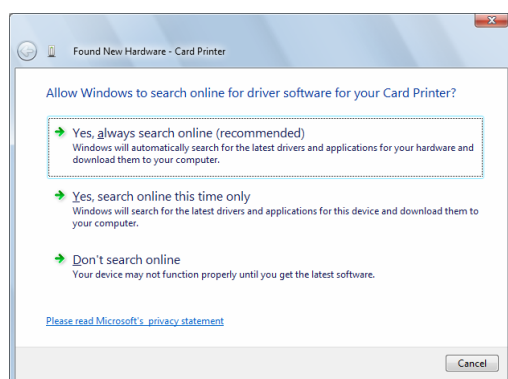
1. When the following screen appears, click the [Install] part.



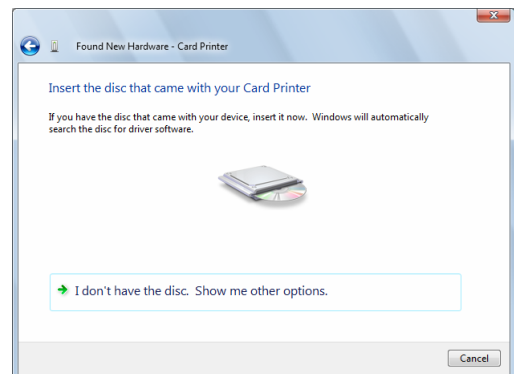
Caution

If the connection is improper, this screen does not appear as the printer will not be detected.

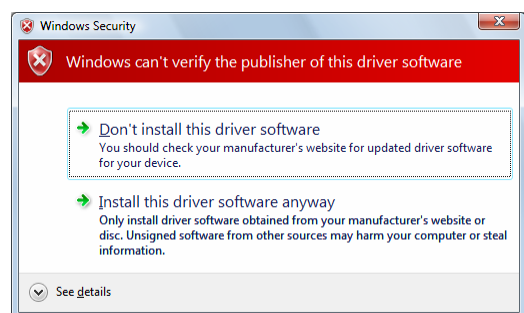
2. When the "User Account Control" screen appears, click the [Continue] button.
3. When the following screen appears, click the [Don't search online] part.



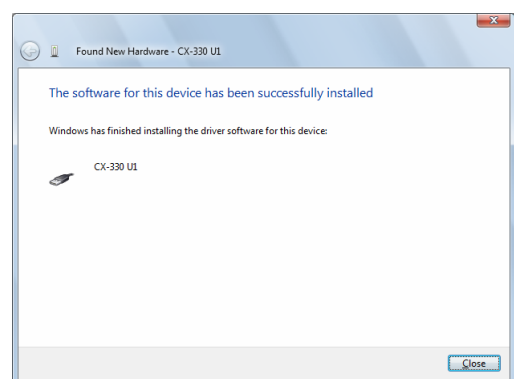
4. When the following screen appears, set the CD-ROM supplied into the PC.



5. When the following screen appears, click the [Install] part.



6. When the following screen appears, click the [Close] button.



Installation of the USB driver is complete.

Installation (Cont'd)

Windows® 2000

1. When the following screen appears, click the [Next] button.



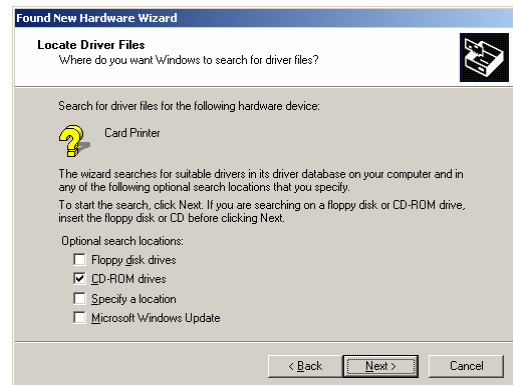
Caution

If the connection is improper, this screen does not appear as the printer will not be detected.

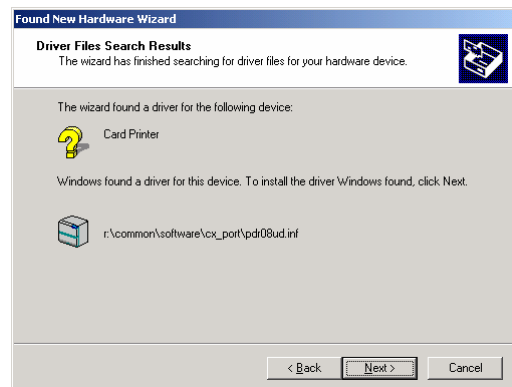
2. When the following screen appears,
 - (1) select [Search for a suitable driver for my device],
 - (2) and click the [Next] button.



3. When the following screen appears,
 - (1) select [CD-ROM drives],
 - (2) and click the [Next] button.



4. When the following screen appears, click the [Next] button.



5. When the following screen appears, click the [Finish] button.



Installation of the USB driver is complete.

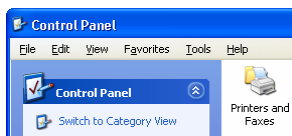
Installation (Cont'd)

Installing the Printer Driver: Shared Network

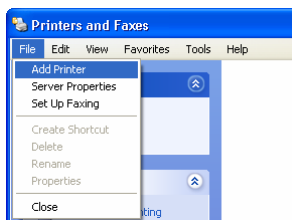
Windows® 2000 / Windows® XP

1. Check to ensure that you can access the PC to which the printer is connected. Check also to ensure that the printer can be shared.

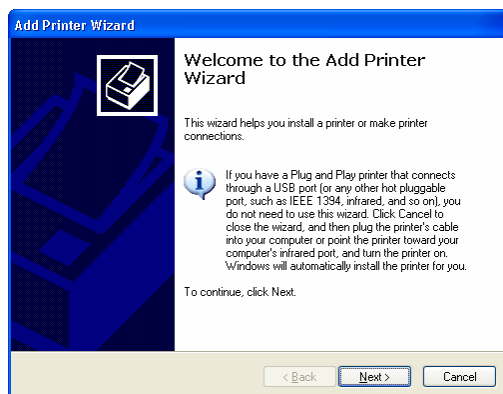
2. Open [Control Panel] in [My Computer], followed by double-clicking [Printers and Faxes].



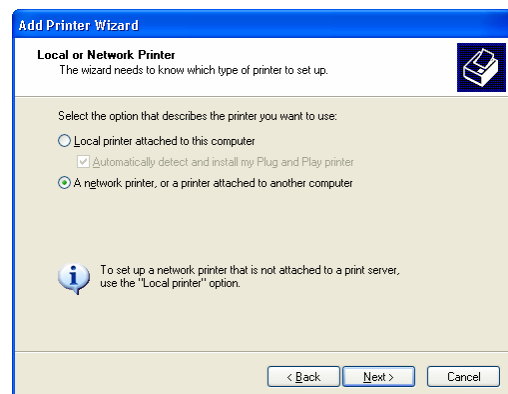
3. When the following screen appears, click [Add Printer] under the [File] menu.



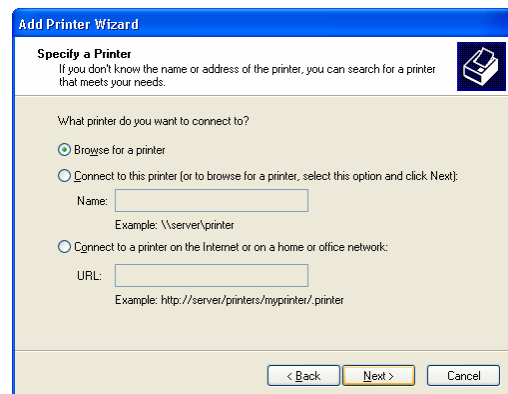
4. When the following screen appears, click the [Next] button.



5. When the following screen appears,
 - (1) select [A network printer, or a printer attached to another computer],
 - (2) and click the [Next] button.

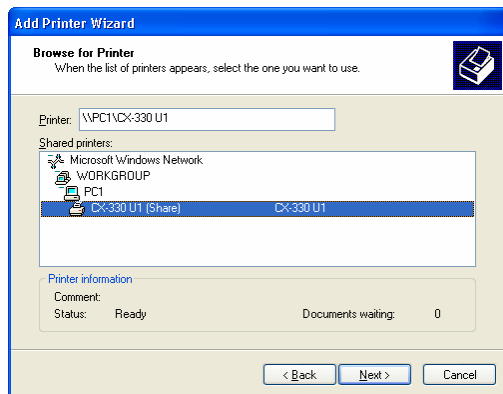


6. When the following screen appears,
 - (1) select [Browse for a printer],
 - (2) and click the [Next] button.

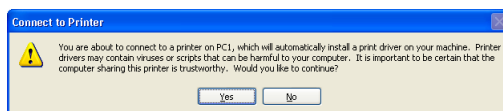


Installation (Cont'd)

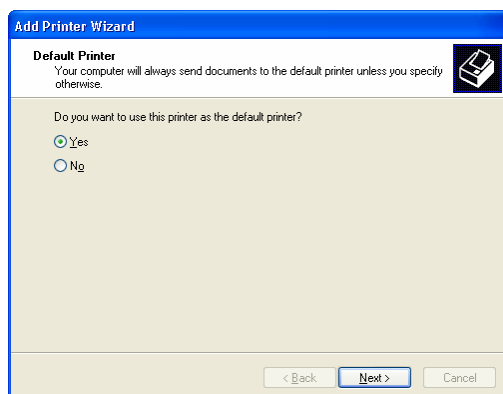
- 7.** When the following screen appears,
- (1) select a printer from [Shared printers],
 - (2) and click the [Next] button.



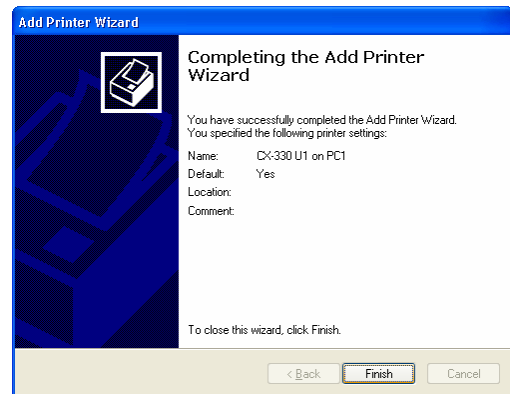
- 8.** When the following screen appears, click the [Yes] button.



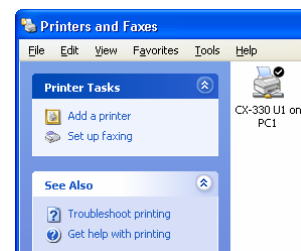
- 9.** When the following screen appears,
- (1) select [Yes] if necessary,
 - (2) and click the [Next] button.



- 10.** When the following screen appears, click the [Finish] button.



- 11.** When the following screen appears, check to ensure that the shared printer is displayed.



Network sharing of the printer driver is complete.

Caution

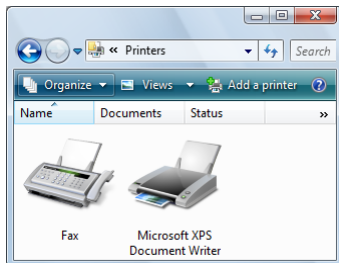
When the access authority of the computer is not proper, the printer may be unable to print, even if installation of the printer driver is completed by the shared network.

Please make the access authority properly according to the instructions of the network administrator.

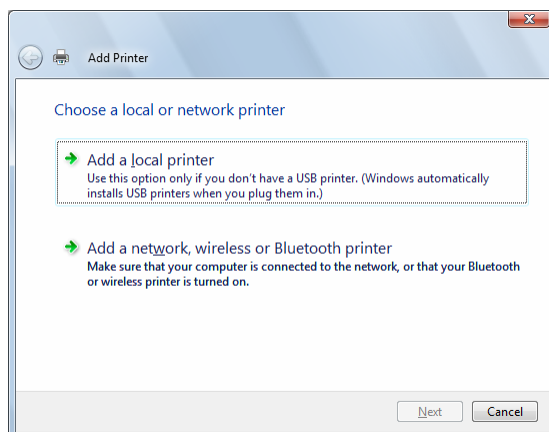
Installation (Cont'd)

Windows® 7 / Windows Vista™

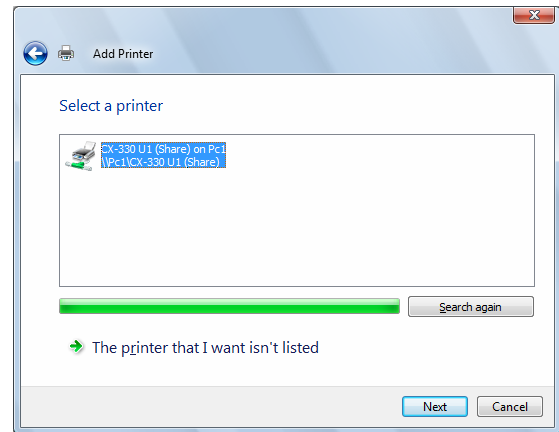
1. Check to ensure that you can access the PC to which the printer is connected. Check also to ensure that the printer can be shared.
2. Open [Control Panel], and double-click the [Printers].
3. When the following screen appears, click the [Add a printer] in the tool bar.



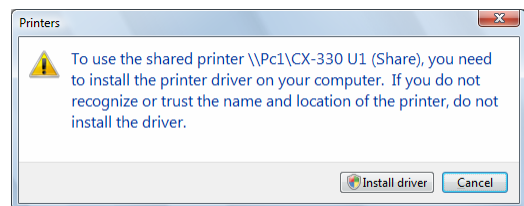
4. When the following screen appears, click the [Add a network,] part.



5. When the following screen appears,
 - (1) select a printer,
 - (2) and click the [Next] button.



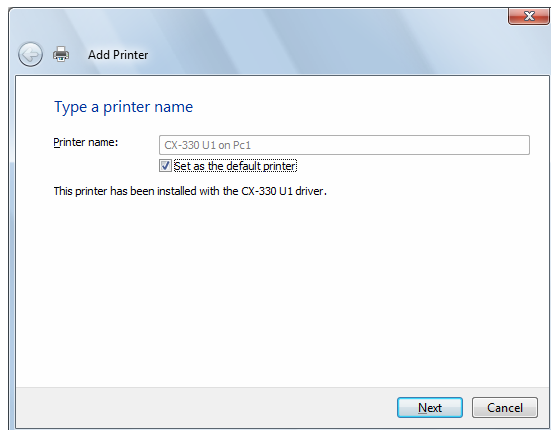
6. When the following screen appears, click the [Install driver] button.



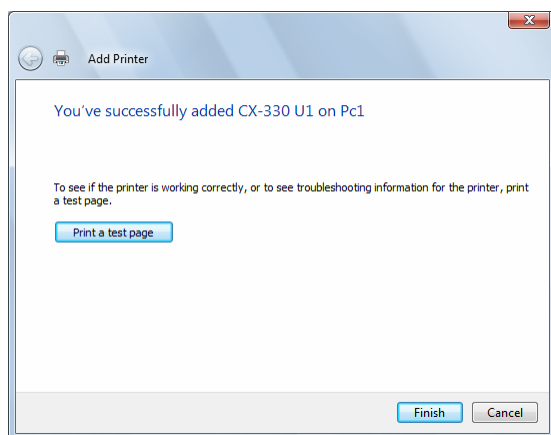
7. When the "User Account Control" screen appears, click the [Continue] button.

Installation (Cont'd)

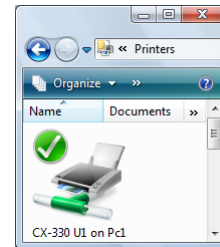
- 8.** When the following screen appears,
- (1) select the [Set as the default printer] if necessary,
 - (2) and click the [Next] button.



- 9.** When the following screen appears, click the [Finish] button.



- 10.** When the following screen appears, check to ensure that the shared printer is displayed.



Network sharing of the printer driver is complete.

Caution

When the access authority of the computer is not proper, the printer may be unable to print, even if installation of the printer driver is completed by the shared network.

Please make the access authority properly according to the instructions of the network administrator.

Uninstallation

Deleting the Printer Driver via USB Connection

1. Connect the PC and printer using a USB cable, followed by turning on the power of the printer.

Caution

Check to ensure that the USB connection printer is recognized on the PC. You will not be able to delete the USB driver properly if the USB connection is not recognized.

2. Start up Windows®, and set the CD-ROM supplied into the PC.

Caution

Deleting needs administrator authority.

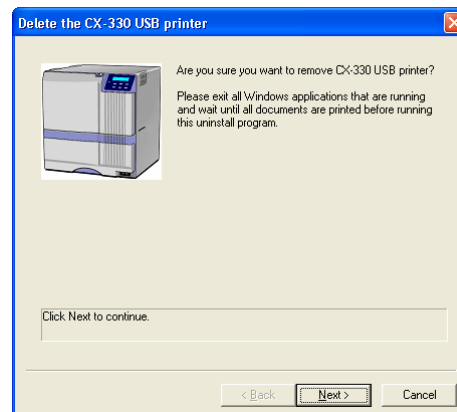
3. If you are not using the “Setup.exe” automatic execution program in the CD-ROM, start the uninstaller for the printer driver by double-clicking the following file in the CD-ROM.

“English\USB_Soft\uninstall.exe”

Note

To use the “Setup.exe” automatic execution program, refer to the chapter on “Installer (Automatic Execution Program).” You can start the uninstaller for the printer driver using the automatic execution program.

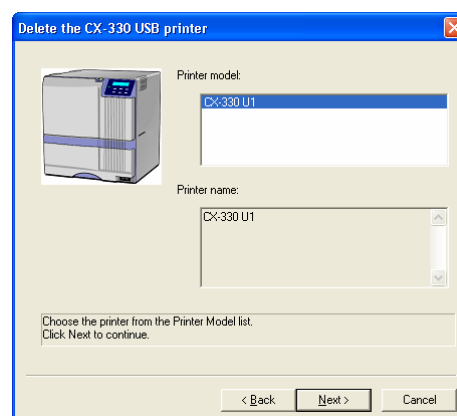
4. When the following screen appears, click the [Next] button.



Caution

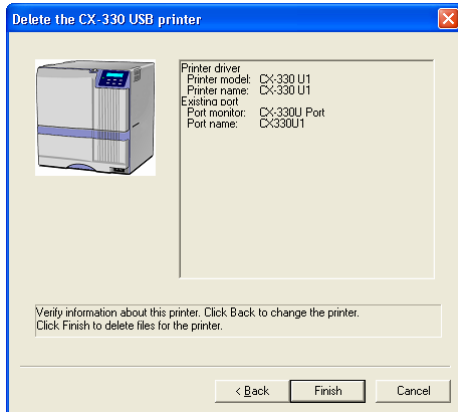
Exit all applications that are currently running. If document printing is currently in progress, wait for all the print jobs to complete.

5. When the following screen appears,
(1) select a printer from [Printer model],
(2) and click the [Next] button.



Uninstallation

6. When the following screen appears, check the printer information. Click the [Finish] button to start deletion of the printer.



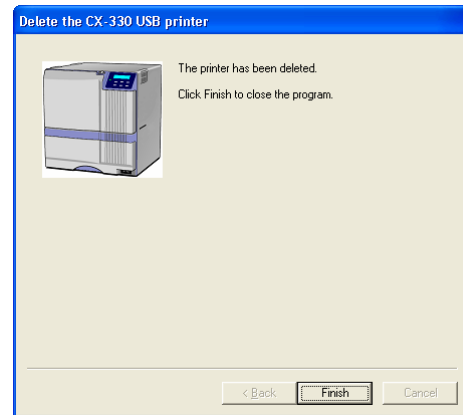
Caution

Delete the USB connection printer driver for each unit number accordingly using the uninstaller.

Note

To change a printer, click the [Back] button.

7. When the following screen appears, click the [Finish] button to exit the program.



Deletion of the printer driver is complete.

Caution

To re-install the printer driver, do so using [Install printer driver] after restarting Windows®.

Updating the Printer Driver via USB Connection

Delete and re-install the printer driver (USB and Ethernet connection).

For procedures to do so, refer to "Installing the Printer Driver" and "Deleting the Printer Driver".

Uninstallation

Deleting the Printer Driver via Ethernet (LAN) Connection

1. Connect the PC and printer using a LAN cable, followed by turning on the power of the printer.

Caution

Do not connect the USB cable to the printer.

2. Start up Windows®, and set the CD-ROM supplied into the PC.

Caution

Deleting needs administrator authority.

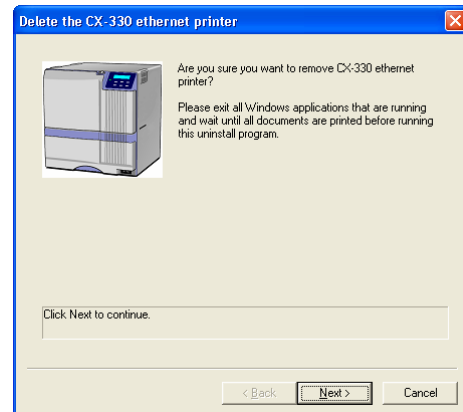
3. If you are not using the “Setup.exe” automatic execution program in the CD-ROM, start the uninstaller for the printer driver by double-clicking the following file in the CD-ROM.

“English\LAN_Soft\uninstall.exe”

Note

To use the “Setup.exe” automatic execution program, refer to the chapter on “Installer (Automatic Execution Program).” You can start the uninstaller for the printer driver using the automatic execution program.

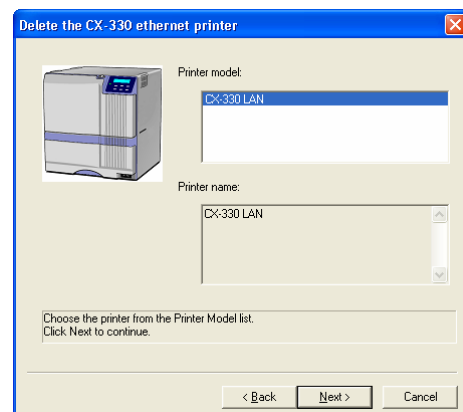
4. When the following screen appears, click the [Next] button.



Caution

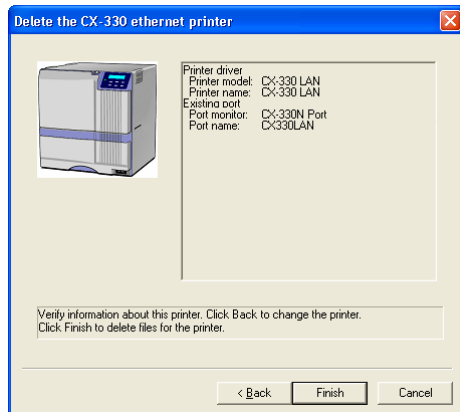
Exit all applications that are currently running. If document printing is currently in progress, wait for all the print jobs to complete.

5. When the following screen appears,
(1) select a printer from [Printer model],
(2) and click the [Next] button.



Uninstallation

6. When the following screen appears, check the printer information. Click the [Finish] button to start deletion of the printer.



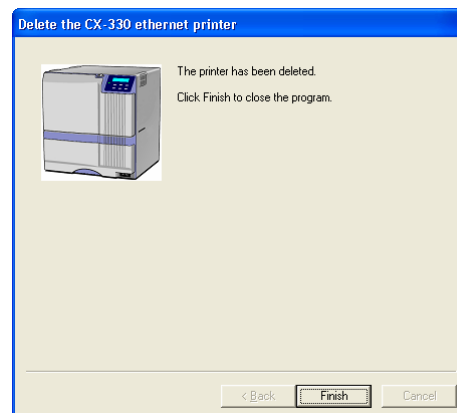
Caution

In the case where multiple Ethernet (LAN) printer drivers are installed, the uninstaller deletes all of these printer drivers.

Note

To change a printer, click the [Back] button.

7. When the following screen appears, click the [Finish] button to exit the program.



Deletion of the printer driver is complete.

Caution

To re-install the printer driver, do so using [Install printer driver] after restarting Windows®.

Updating the Printer Driver via Ethernet (LAN) Connection

Delete and re-install the printer driver (Ethernet and USB connection).

For procedures to do so, refer to "Installing the Printer Driver" and "Deleting the Printer Driver".

Uninstallation

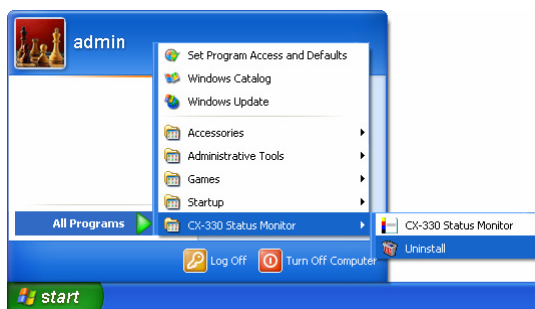
Deleting the Status Monitor

1. Exit the CX-330 status monitor.

Caution

Deleting needs administrator authority.

2. Execute [Uninstall] under [CX-330 Status Monitor] of the Start menu.



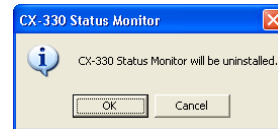
Note

If “Register for start menu” is not selected during installation of the status monitor, delete using “Add/Delete Programs” in “Control Panel”.

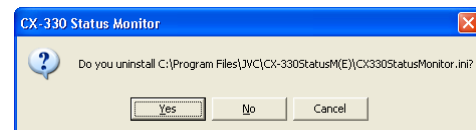
Note

To use the “Setup.exe” automatic execution program, refer to the chapter on “Installer (Automatic Execution Program).” You can start the uninstaller for the status monitor using the automatic execution program.

3. When the following screen appears, click the [OK] button to start uninstallation.



4. When the following screen appears, click the [Yes] button if you want to delete the setup file.



5. When the following screen appears, click the [Finish] button to exit the program.



Deletion of the status monitor is complete.

Updating the Status Monitor

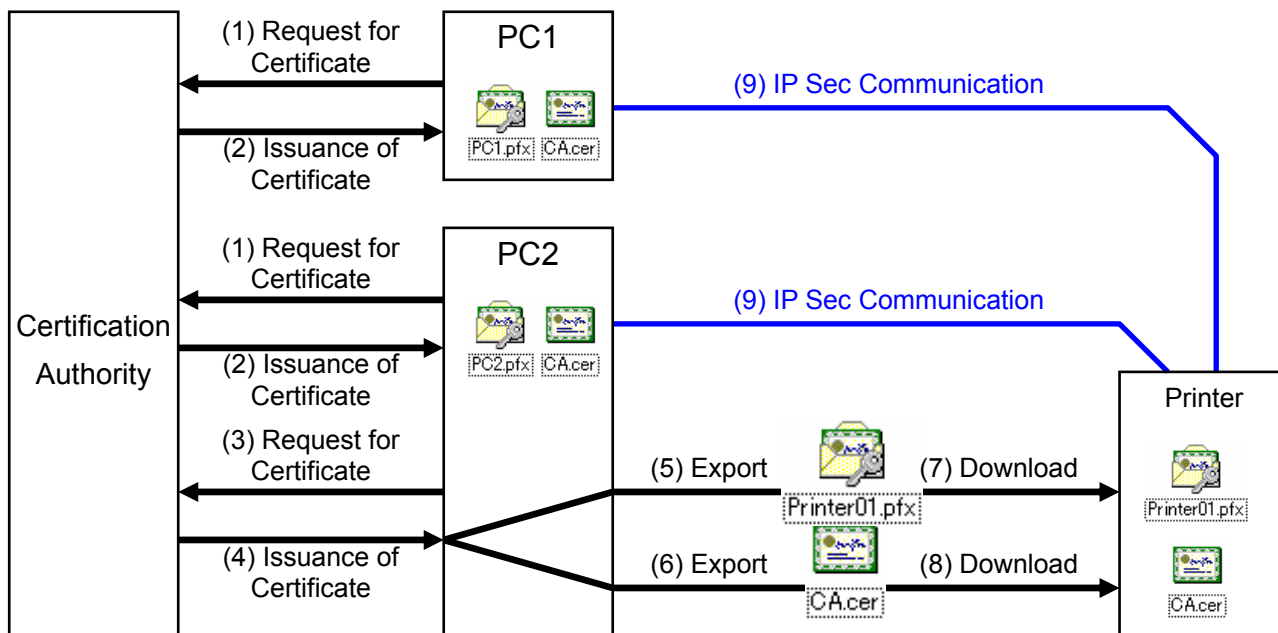
Delete and re-install the status monitor.

For procedures to do so, refer to “Installing the Status Monitor” and “Deleting the Status Monitor”.

IP Sec Setup

Flow of IP Sec Setting

The following chart illustrates the setting flow before starting IP Sec at the printer.



[Certificate Authentication]

- (1) Request the "PC Certificate" to the certification authority.
- (2) The "PC Certificate" and "Certification Authority Certificate" are issued by the certification authority. Install these on the PC.
- (3) Request the "Printer Certificate" to the certification authority.
- (4) The "Printer Certificate" and "Certification Authority Certificate" are issued by the certification authority. Install these on the PC.
- (5) Export the "Printer Certificate" and save it in a file.
- (6) Export the "Certification Authority Certificate" and save it in a file.
- (7) Connect the printer via USB, and download the "Printer Certificate" using the status monitor.
- (8) Connect the printer via USB, and download the "Certification Authority Certificate" using the status monitor.
- (9) Connect the printer via the network (Ethernet) and enable IP Sec (IP Security) on the PC to start IP Sec communication.

Consult the network administrator.

[Preshared Key Authentication]

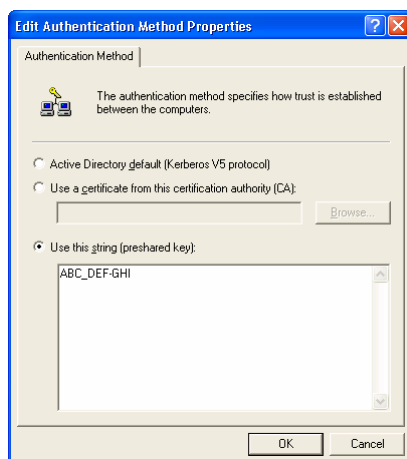
- Connect the printer via USB, and download the "Preshared Key File" using the status monitor.
- (9) Connect the printer via the network (Ethernet) and enable IP Sec (IP Security) on the PC to start IP Sec communication.

Preshared Key File

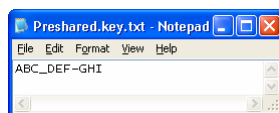
Caution

Operate IP Sec (IP Security) on Windows® by following the instructions of the network administrator for the location where the printer is installed.

1. Start “IP Security Policy Management” under the MMC (Management Console).
2. Open the “Edit Authentication Method Properties” of the policy for which the preshared key is to be used.



3. Make use of applications such as Windows® “Notepad” to create a preshared key string, and save it as a file with the extension “.key”.



4. After saving, this file will be downloaded as the “Preshared Key File” when setting “Preshared Key Authentication” using the status monitor.

Caution

ASCII characters that can be used for the preshared key of the printer are as follows. The maximum length is 255 characters.

	2x	3x	4x	5x	6x	7x
0		0	@	P		p
1		1	A	Q	a	q
2		2	B	R	b	r
3		3	C	S	c	s
4		4	D	T	d	t
5		5	E	U	e	u
6		6	F	V	f	v
7		7	G	W	g	w
8	(8	H	X	h	x
9)	9	I	Y	i	y
A			J	Z	j	z
B			K		k	
C			L		l	
D	-		M		m	
E	.		N		n	
F			O	_	o	

Caution

Manage the “Preshared Key File” according to the instructions of the network administrator.

Note

For “Preshared Key Authentication” procedures on the printer, refer to the status monitor instruction manual.

Printer Certificate File

Caution

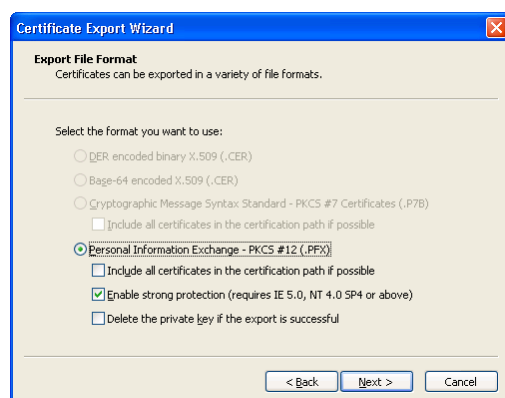
Operate IP Sec (IP Security) on Windows® by following the instructions of the network administrator for the location where the printer is installed.

1. Obtain the printer certificate from the certification authority, and install it on the PC's "Certificate (Local Computer)".

Caution

Obtain the printer certificate as an "exportable key".

2. Start "Certificate (Local Computer)" under the MMC (Management Console).
3. Open the Personal Store to export the printer certificate. The format is "PKCS#12". Make sure that you specify a password. The file is saved with the extension ".pfx".



4. After saving, this file will be downloaded as the "Printer Certificate File" when setting "Certificate Authentication" using the status monitor.

Caution

ASCII characters that can be used for the password of the printer certificate of the printer are as follows. The maximum length is 255 characters.

	2x	3x	4x	5x	6x	7x
0		0	@	P		p
1		1	A	Q	a	q
2		2	B	R	b	r
3		3	C	S	c	s
4		4	D	T	d	t
5		5	E	U	e	u
6		6	F	V	f	v
7		7	G	W	g	w
8	(8	H	X	h	x
9)	9	I	Y	i	y
A			J	Z	j	z
B			K		k	
C			L		l	
D	-		M		m	
E	.		N		n	
F			O	_	o	

Caution

Manage the "Printer Certificate File" according to the instructions of the network administrator.

Caution

There is an expiration date for the "Printer Certificate". IP Sec communication may fail or may not be encrypted successfully if an expired certificate is used.

Note

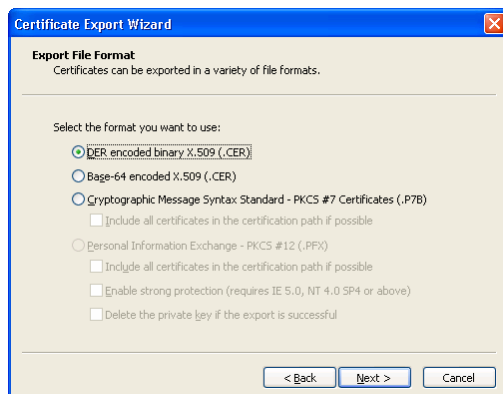
For "Printer Certificate Authentication" procedures on the printer, refer to the status monitor instruction manual.

Certification Authority Certificate File

Caution

Operate IP Sec (IP Security) on Windows® by following the instructions of the network administrator for the location where the printer is installed.

1. Start “Certificate (Local Computer)” under the MMC (Management Console).
2. Open the Certification Authorities Store, and export the same “Certification Authority Certificate” as the printer certificate. The format is “DER encoded binary X509”. The file is saved with the extension “.cer”.



3. After saving, this file will be downloaded as the “Certification Authority Certificate File” when setting “Certificate Authentication” using the status monitor.

Caution

Manage the “Certification Authority Certificate File” according to the instructions of the network administrator.

Caution

There is an expiration date for the “Certification Authority Certificate”. IP Sec communication may fail or may not be encrypted successfully if an expired certificate is used.

Note

For “Printer Certificate Authentication” procedures on the printer, refer to the status monitor instruction manual.

Sublimation Type Retransfer Printer CX-330 Printer Software Installation Manual